

FIFIELD-CAHILL RIDGE TRAIL GUIDE

Trailhead Locations:

- 1) Skyline Quarry — access at Skyline Quarry Gate, which is 0.7 miles west of the intersection of lower Skyline Boulevard and Highway 92. Look for the sign.
- 2) Cemetery Gate — access via Skylawn Cemetery.
- 3) Portola Gate — access via Army Road from the terminus of Sneath Lane.

Activities: Trail excursions on foot, bicycle, or horseback.

Trail Length: Trail is 10 miles long and is the SFPUC-managed segment of the Fifield-Cahill Ridge Trail from Highway 92 to Sweeney Ridge.

Trail Connections: Fifield-Cahill Ridge connects with the 3.7 miles of the Sweeney Ridge Trail open to the public. Visitors interested in connecting their trek on the Fifield-Cahill Ridge Trail with Sweeney Ridge can contact the Golden Gate National Recreation Area at 415-561-4700.

Trail Condition: The trail is a gravel service road, with periods of loose base rock. Grades range from 0% to 21%. The steepest grade stretches 1.3 miles from Skyline Quarry (elevation 400 ft.) to Cemetery Gate (elevation 1,050 ft.) on Cahill Ridge, with a vertical elevation change of 650 ft.

Time: Approximately 5-7 hours to complete the entire 10 miles on foot, with shorter events to be scheduled as needed.

Weather Conditions: Vary greatly over the length of the trail. Prepare for potential extremes in temperature and conditions due to microclimatic influences particularly in the summer. Trail users can expect as much as 20 F variations in temperature.

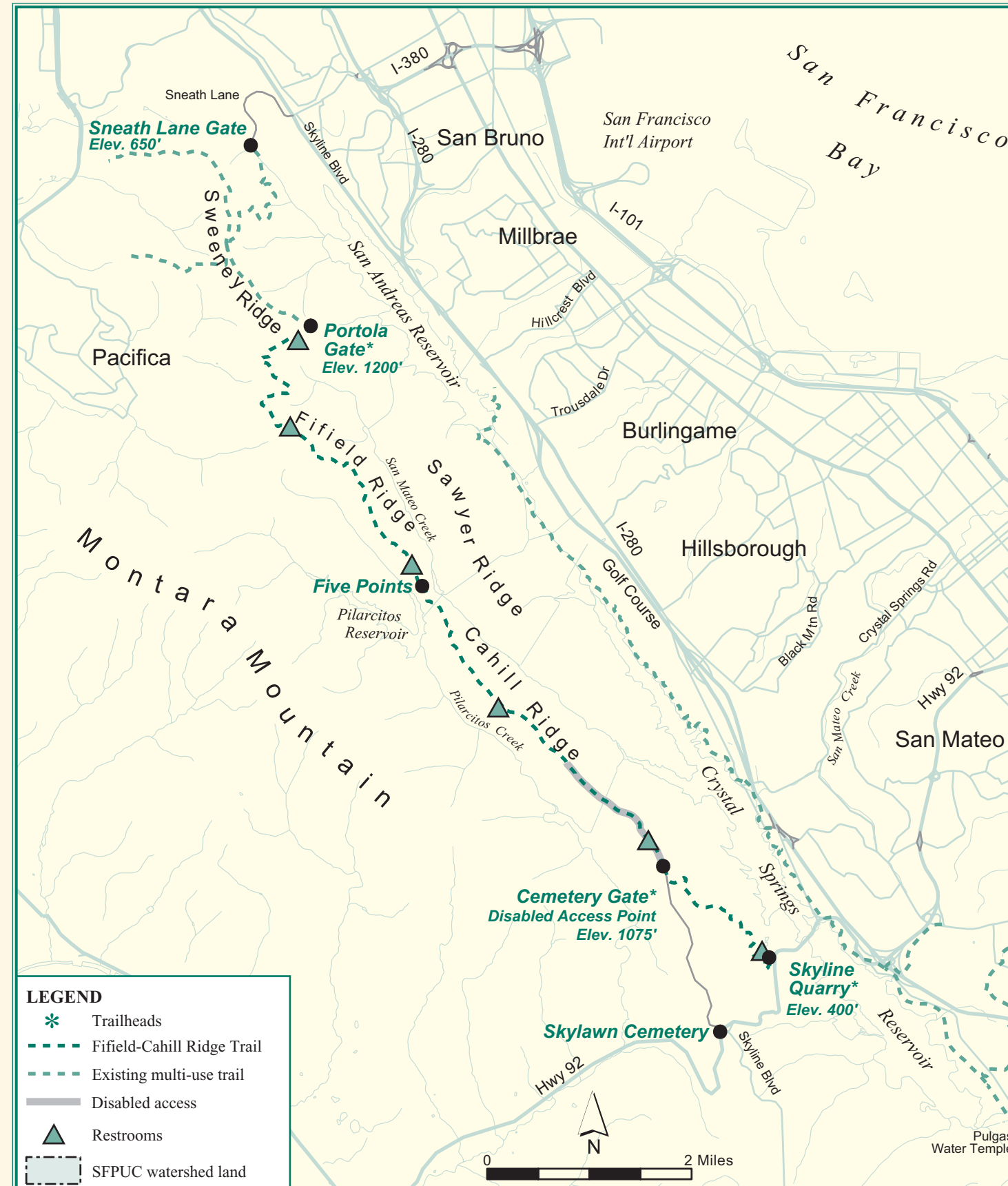
Trail Amenities: Toilets at approximately 2-mile intervals along the trail, starting at Skyline Quarry.

NO WATER IS AVAILABLE ON THE TRAIL. You must bring your own water. At least 1½ quarts per person is recommended.

Persons with Special Needs: Trail users with disabilities may access the trail at Cemetery Gate. The accessible portion of the trail stretches 1.4 miles north of Cemetery Gate to a rest area with accessible restroom facilities. Accessible trail event opportunities will be available for independent use for persons of all abilities. Please call 650-872-5934 for information on special needs access to the trail.

Vegetation: Primarily coastal scrub, old growth Douglas Fir, and mixed hardwood/Douglas Fir woodland.

SAN FRANCISCO PENINSULA WATERSHED



City and County of San Francisco
San Francisco Public Utilities Commission

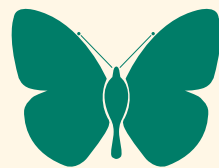


FIFIELD-CAHILL RIDGE TRAIL

San Francisco
Peninsula Watershed



Floral communities thrive along the Fifield-Cahill Ridge Trail.



San Francisco Public Utilities Commission

E. Dennis Normandy, President
 Ashok Kumar Bhatt, Vice President
 Ann Moller Caen
 Jeffrey A. Chen
 Robert J. Costello

Patricia E. Martel, General Manager

ABOUT SFPUC

The San Francisco Public Utilities Commission supplies high quality water to 2.4 million residents in four counties in the San Francisco Bay Area. SFPUC treats wastewater and storm water run-off in the City and County of San Francisco. The SFPUC provides power for City services including MUNI, San Francisco International Airport, City-owned buildings including City Hall and 40,000 streetlights.



sfwater.org

A REFUGE FOR NATURE IN OUR OWN BACK YARD

The San Francisco Public Utilities Commission's (SFPUC) Peninsula Watershed is home to some of the Bay Area's most intact native habitats. Located in San Mateo County 13 miles south of San Francisco, the Peninsula Watershed consists of 23,000 acres of forested hills, coastal scrub, and grasslands that harbor over 165 species of birds, 800 species of plants and trees, 50 species of mammals, and 30 species of reptiles and amphibians. In fact, the SFPUC Peninsula Watershed contains the highest concentration of rare, threatened, and endangered species in the nine-county Bay Area and is a State Fish and Game Refuge.

IT'S ABOUT THE WATER

The reason that a pristine native habitat exists in our own backyard is because this watershed also contains three drinking water reservoirs that are protected by the SFPUC. The water in Crystal Springs, Pilarcitos, and San Andreas reservoirs comes from both local rainfall and from snow-capped peaks in Yosemite National Park - and eventually makes its way to faucets in San Francisco and the Peninsula.

Providing a reliable supply of high-quality water is the SFPUC's top priority. We are seriously committed to protecting our watershed lands and the natural habitats they harbor. By carefully regulating human activity in our watersheds, we minimize the risk of fire, erosion, and pollution that can negatively impact water quality. We are extremely proud of the quality of our water, and we appreciate the assistance of all Bay Area residents in helping us keep our watersheds healthy.

RECREATION THAT RESPECTS NATURE

We recognize the watershed's potential as an educational tool and refuge from urban development. We believe that sound environmental stewardship can coexist with limited recreational uses on our watershed lands.

This portion of the Fifield-Cahill Ridge Trail opened to the general public in the summer of 2003. Visitors can now make reservations for a guided tour of the Fifield-Cahill Ridge Trail that passes through the San Francisco Peninsula Watershed west of Lower Crystal Springs and San Andreas Reservoirs.



Looking north from inside the Peninsula Watershed.

This trail segment is the SFPUC-managed component of the Bay Area Ridge Trail. The entire 400-mile Bay Area Ridge Trail, when completed, will circle the entire Bay along the ridgelines, connecting parks, open spaces, and watershed lands to nearby communities.

The newly opened 10-mile trail starts at Skyline Quarry at Highway 92 and extends northward to the watershed boundary at the Portola Ridge gate. There it connects with the GGNRA's (Golden Gate National Recreation Area) trail system and the Sweeney Ridge section of the Bay Area Ridge Trail, which is open to the public. Trail users can then access the Sneath Lane Gate Trailhead by following the Sweeney Ridge Trail to Army Road, which leads to the trailhead approximately 3.7 miles north of the Portola Ridge gate.

Local nature lovers can enjoy the rare opportunity to hike, bike, or ride their horses through stands of pristine old growth Douglas Fir, evergreen hardwood woodlands and fragrant coastal scrub while enjoying expansive vistas of our watershed lands, reservoirs, the Pacific Ocean and San Francisco Bay. Trained volunteer trail leaders will head excursions three days a week. We will carefully monitor trail use by the public to ensure that there are no significant impacts to the fragile ecosystem.

RESERVATIONS

Small groups of hikers, bicyclists, or equestrians can now make reservations for a guided excursion through the Fifield-Cahill Ridge Trail. Because of environmental restrictions, groups must be accompanied by a volunteer trail leader and are limited to approximately 20 people (less on horseback), scheduled no more than three times a day on Wednesdays, Saturdays, and Sundays. To arrange for a guided tour of the Fifield-Cahill Ridge Trail, register on-line at trail.sfwater.org, via e-mail at RidgeTrail@sfwater.org, or call 650-652-3203.

BE A VOLUNTEER TRAIL LEADER

Volunteer opportunities are a vital part of the trails program. Trail leaders will accompany all trail tours and people with diverse skills such as naturalists, artists, students, gardeners, and many others will find a place to share their knowledge and experience. Your contribution can make a big difference and help protect the watershed's unique natural wonders while enjoying the great outdoors.

For more information on becoming a volunteer trail leader, please visit our volunteer web page at volunteer.sfwater.org, e-mail us at RidgeTrail@sfwater.org, or call 650-652-3203 for more information.

The Peninsula Watershed is a haven for these and other species of concern:

BIRDS

Cooper's Hawk
 Sharp-shinned Hawk
 Great Blue Heron
 Marbled Murrelet
 Northern Harrier
 Merlin
 Peregrine Falcon
 Bald Eagle
 Osprey
 American White Pelican

AMPHIBIANS AND REPTILES

California Tiger Salamander
 California Red-legged Frog
 Foothill Yellow-legged Frog
 Western Spadefoot Toad
 Western Pond Turtle
 San Francisco Garter Snake

MAMMALS

Pallid Bat
 Western Mastiff Bat
 Small-footed Myotis
 Long-eared Mmyotis
 Fringed Myotis
 Townsend's Big-eared Bat
 Badger
 Mountain Lion

PLANTS

San Mateo Thorn-mint
 Coast Rock Cress
 San Bruno Mountain Manzanita
 Montara Mmanzanita
 Brewer's Calandrinia
 Robust Spineflower
 Fountain Thistle
 Mountain Lady's Slipper
 Western Leatherwood
 California Bottle-brush Grass
 Marsh Horsetail
 Tiburon Buckwheat
 San Mateo Woolly Sunflower
 Stink Bells
 Fragrant Fritillary
 Diablo Rock-rose
 Marin Dwarf Flax
 Kellogg's Horkelia
 Bristly Linanthus
 San Mateo Tree Lupine
 Arcuate Bush Mallow
 Dudley's Lousewort
 White-rayed Pentachaeta
 Gairdner's Yampah
 Chori's Popcorn-flower
 Hickman's Cinquefoil

INVERTEBRATES

Opler's Longhorn Moth
 Edgewood Blind Harvestman
 Serpentine Phalangid
 Monarch Butterfly
 Bay Checkerspot Butterfly
 Mission Blue Butterfly
 San Francisco Fork-tailed Damselfly
 San Francisco Lacewing
 Unsilvered Fritillary Butterfly
 Callipe Silverspot Butterfly



Callipe Silverspot Butterfly