



SEWER SYSTEM IMPROVEMENT PROGRAM | Grey. Green. Clean.

Urban Watershed Assessment

The Urban Watershed Assessment is the San Francisco Public Utilities Commission’s (SFPUC) most innovative and comprehensive sewer system planning effort to date.

A New Kind of Plan

The Urban Watershed Assessment is part of the SFPUC’s Sewer System Improvement Program, the City’s 20-year program to plan, identify, and build investment priorities for our sewer system. The Urban Watershed Assessment will shape the next generation of collection system projects to improve seismic reliability, manage stormwater, reduce odors, protect water quality, and reduce flooding. Addressing challenges now is more cost effective than deferring them to when the system fails and poses a critical threat to the city.

What’s Different

Over the years, the City has produced other sewer improvement plans. The Urban Watershed Assessment is different because it kicks off a new sustainable process: the development of a program integrating above and below ground solutions. The solutions range from permeable pavement and raingardens to sewer pipes and pump stations. Green and grey strategies must work together to leave a better San Francisco for our children and grandchildren. These technologies won’t just help protect the sewer system from earthquakes and sea level rise, they have the potential to attract investment and jobs to ensure continued prosperity, and create sustainable communities with beautified neighborhoods.

2011 —————> Public Outreach and Involvement —————> DEC. 2015



The Urban Watershed Assessment Process



OUR COLLECTION SYSTEM

The Urban Watershed Assessment will plan for improvements to the city’s collection system, which includes the downspouts, streets, pipes, and green infrastructure elements that carry stormwater and sewage to our treatment plants.



AGING INFRASTRUCTURE

Our system is aging and in need of urgent upgrades. Pipelines and pump stations must be brought into a state of good repair to ensure the reliability of our sewer system.

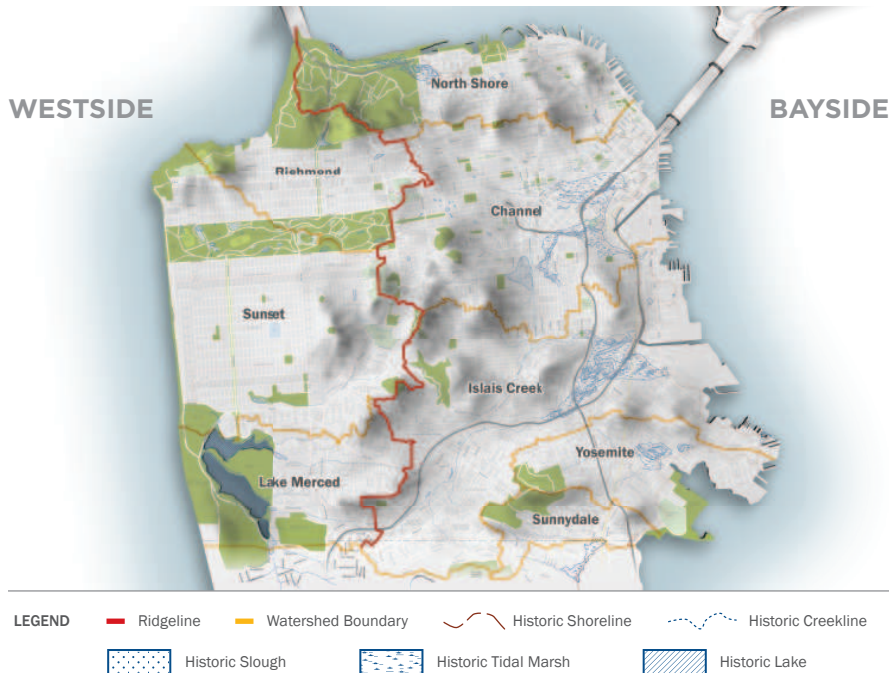


IMPACTS OF CLIMATE CHANGE

Sea level rise could cause saltwater to flow back into our system, causing flooding and endangering our treatment plants.

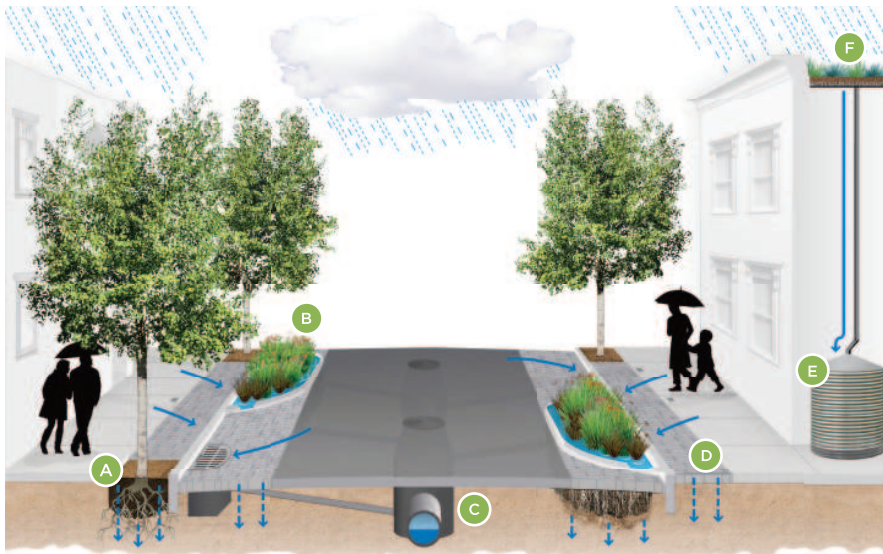
Planning New Investments in Your Watersheds

Over the next 20 years, approximately \$2.7 billion is anticipated to be needed to upgrade the collection system. How should we prioritize projects across the city's watersheds?



Project Examples

The Urban Watershed Assessment will identify both green and grey infrastructure solutions to help address the challenges facing our sewer system, including climate change, localized flooding, and aging infrastructure. Below are some examples of future projects.



(A) street trees with flow through planters, (B) rain gardens, (C) upgraded sewer pipes, (D) permeable pavement, (E) cisterns, (F) vegetated roofs

Projects Already Underway

The SFPUC is constructing eight green infrastructure projects, one in each of the urban watersheds, to test green technologies and evaluate their long-term effectiveness. These projects are setting the stage for the City's new way for managing stormwater. Projects currently in the planning process include: Mission & Valencia Green Gateway, Chinatown Green Alley, Wiggle Neighborhood Green Corridor, and Sunset Watershed Green Infrastructure Project.

Planning is also underway for the Central Bayside System Improvement Project, a major tunnel project to provide sewer system reliability and redundancy.



How to Get Involved

Urban Watershed Assessment planning workshops and presentations are scheduled for the Bayside watersheds in summer and fall of 2013, and for the Westside watersheds in early 2014. There will be additional opportunities for public engagement through the adoption of the plan in 2015.

The website is regularly updated with notices of upcoming meetings, workshops, educational programs and other content.

sfwater.org/urbanwatersheds
urbanwatersheds@sfwater.org

