

APPENDICES



- 1769 Expedition of Portola and Ortega
 1773 Nov 30 Expedition of Moncada and Palou
 1776 *Jul 4 America's 13 original colonies formally declare independence from English rule*
 Presidio Pueblo and Mission San Francisco established
- 1800**
- 1825 *Spanish royal rule in California ends*
 1833 Mexican Secularization Act opens California to world trade
 1835 Trading post established at Yerba Buena Cove
 1836 First adobe building built at Yerba Buena
 1846 *Jul 9 Captain John B. Montgomery, USS Portsmouth, claims Pueblo of Yerba Buena for U.S.*
 Pueblo of Yerba Buena renamed Town of San Francisco
 Population of San Francisco estimated at 800
 1848 *Jan 24 Gold discovered at Sutter's Mill in Coloma, CA*
 1849 Drinking water sold by the barrel and bucket in San Francisco's streets
 Gold Rush swells San Francisco's population to 40,000
Dec 24 Christmas Eve fire devastates San Francisco; \$1 million in damages
 1850 San Francisco devastated by fire four times in peak of Gold Rush;
 damages more than \$6 million
Sep 9 California becomes 31st state admitted to the Union
 1851 Mountain Lake Water Company formed
 Sausalito Water and Steam Tug Company imports water by barge from Marin
Dec 14 Sixth major fire in city destroys 3,000 homes over a square mile; \$12 million in damages
 1853 Groundbreaking ceremonies at Presidio for Mountain Lake municipal water supply
 1856 San Francisco City Water Works granted franchise; first pipelines laid in the city
 San Francisco's population drops to 30,000
Jul 1 City and County of San Francisco Consolidation Act takes effect
 1857 San Francisco City Water Works brings water from Lobos Creek
 1858 Spring Valley Water Works franchised by State Legislature
 1860 Alexei W. von Schmidt becomes Chief Engineer of Spring Valley Water Works
 U.S. Census reports San Francisco population at 78,000
 Spring Valley takes over Islais and Salinas Water Company
 1861 San Francisco City Water Works builds Francisco Reservoir near Russian Hill
 First Pilarcitos Dam and Tunnel built on Peninsula
Apr 12 Southern Confederacy opens fire on Fort Sumter; SC to start Civil War
 1862 *Jul 4 Pilarcitos water supply reaches San Francisco in time for festivities*
 Spring Valley Water Works now rivals San Francisco City Water Works
 1864 A. W. von Schmidt leaves Spring Valley Water Works for private practice
Oct 8 Spring Valley hires Hermann Schussler to raise Pilarcitos Dam
 City Water Works, faced with silt in its water, taps into Spring Valley water main
 1865 Hermann Schussler starts second tunnel in Pilarcitos Aqueduct
Central Pacific Railroad starts western line of transcontinental railroad through Niles Canyon
Feb 13 Spring Valley buys out San Francisco City Water Works
 1866 *May Hermann Schussler named Chief Engineer of Spring Valley Water Works*
 1867 Main Pilarcitos Dam completed to height of 70 feet; first dam submerged
 1868 Spring Valley Water Works buys San Andrés Valley and Watershed
Apr Hermann Schussler starts construction of San Andrés Dam
Aug Spring Valley Water Works acquires rights to Lake Merced
 1869 Spring Valley Water Works sues San Francisco to pay their bills for municipal water supplies
May 10 Golden spike driven into the final tie of the first transcontinental railroad
 1870 State legislature considers bill by A. W. von Schmidt to provide Lake Tahoe water to the City
Jun Lock's Creek Line Aqueduct (Stone Dam Tunnel No. 1) started
 1871 Stone Dam and Lock's Creek Tunnel completed
Apr Mayor Thomas Selby vetoes Board of Supervisors \$6 million bond issue for Lake Tahoe supplies



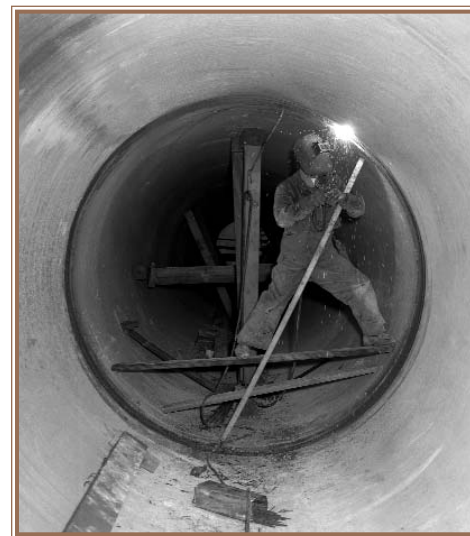
E. R. Bottimore, watershed keeper on patrol 1924

- 1873 San Francisco makes it first offer to buy out the Spring Valley Water Works
- 1874 H. Schussler raises Pilarcitos and San Andrés Dams to 95 feet each
- 1875 *Apr 19* City Engineer T. R. Scowden recommends that San Francisco buy Calaveras site
Spring Valley Water Works buys Calaveras land and water rights
San Francisco again offers to buy out Spring Valley Water Works
- 1876 *Mar 10 Alexander Graham Bell speaks over the first telephone*
- 1877 Upper Crystal Springs Dam completed to height of 70 feet
Spring Valley Water Works declines San Francisco's buyout offer of \$11 million
- 1880 New State Constitution gives San Francisco Board of Supervisors authority to fix water rates
- 1882 *Sep 4 Thomas Edison opens first commercial plant to generate electricity in New York City*
May John P. Dart, San Francisco and Tuolumne Water Company, proposes Tuolumne River water for San Francisco
- 1888 San Francisco Mayor E. P. Bond buys Tuolumne River water rights for \$200,000
- 1890 H. Schussler completes Lower Crystal Springs Dam and first outlet gate tower
- 1891 John Quinton surveys Tuolumne River as potential San Francisco water source
H. Schussler raises Lower Crystal Springs Dam parapet and builds second outlet gate tower
- 1898 Spring Valley Water Works stops use of Lock's Creek Aqueduct, drills in Pleasanton Well Field
- 1900**
- 1900 *Jan 8* New City Charter requires development of municipal water supply
U.S.G.S. 21st Annual Report recommends Hetch Hetchy for San Francisco's water supply
Spring Valley Water Works completes Sunol Aqueduct and Filter Beds
- 1901 *Feb 15* Congress permits the Interior Secretary to grant rights-of-way through Yosemite
July 29 As private citizen, Mayor James Phelan files for water rights on Tuolumne River
Aug 12 City Engineer Carl Grunsky recommends Tuolumne River out of 13 sources considered
Oct 15 Mayor Phelan applies to Interior Secretary Ethan Hitchcock for reservoir sites in Sierra Nevada
- 1903 Spring Valley Water Company buys out Spring Valley Water Works
Jan 20 Secretary Hitchcock denies San Francisco's application to develop Hetch Hetchy
Feb 20 Mayor Phelan assigns all Hetch Hetchy water interests to San Francisco
Dec 17 Orville and Wilbur Wright take first flight over dunes at Kitty Hawk, NC
- 1906 Board of Supervisors adopts resolution No. 6949 abandoning development of Hetch Hetchy
Apr 18 Great Earthquake disrupts San Francisco's water supply; fires rage for three days
May 26 A. W. von Schmidt dies at age 85
- 1907 U.S.G.S. declares name of San Andrés Valley to be San Andreas
- 1908 *Apr 22* City Engineer Marsden Manson files duplicates of Phelan's maps with Interior Secretary James Garfield
May 11 Secretary Garfield grants City limited permission to develop Hetch Hetchy and Lake Eleanor
- 1909 Hermann Schussler retires from Spring Valley Water Company
- 1910 Diversion tunnel constructed at Lake Eleanor dam site
Sunol Water Temple, designed by noted architect Willis Polk, built to celebrate Sunol Valley waters
Jan 14 San Francisco overwhelmingly approves \$45 million bond issue to build Hetch Hetchy
Feb 25 Interior Secretary Richard Ballinger withdraws Hetch Hetchy from Garfield Permit
Apr 13 City purchases Eleanor Basin lands and water rights for \$400,000
May Secretary Ballinger asks War Secretary Jacob Dickinson to assign Board of Army Engineers to consider Hetch Hetchy Project
- 1911 California Constitution grants Railroad Commission authority to fix water rates
Crystal Springs Dam raised to 154 feet
Jun 22 City purchases Cherry Basin land and water rights for \$600,000
- 1912 *Jan 8* James "Sunny Jim" Rolph becomes Mayor of San Francisco
Jul 15 John Freeman publishes his plan to develop Hetch Hetchy, Eleanor and Cherry Valleys
Sep 1 Mayor Rolph hires Michael M. O'Shaughnessy as City Engineer
Nov City attends hearings before Interior Secretary Walter Fisher on Hetch Hetchy Project



*Roughening the crest of O'Shaughnessy Dam
1937*

- 1913 Feb 19 Board of Army Engineers recommends Hetch Hetchy as best supply for San Francisco
 Mar 1 Interior Secretary Fisher refuses further permits without Congressional authority
 Jul 3 Spring Valley starts construction of Calaveras Dam
 Aug 1 Rep. John E. Raker, California, 2nd District, introduces Hetch Hetchy Act to Congress
 Sep 3 & Dec 6 House & Senate, respectively, adopt Raker Act
 Dec 19 President Woodrow Wilson signs Raker Act into law
- 1914 Spring San Francisco ratifies Raker Act
 Apr Surveys start for Hetch Hetchy Railroad route
 Jul Contractors begin building Hetch Hetchy roads at Hog Ranch (now Camp Mather)
- 1915 Jul 21 Canyon Ranch sawmill starts operations to provide lumber for Hetch Hetchy
 Sep 1,000-foot tunnel built inside cliff at O'Shaughnessy Dam site to divert Tuolumne River
 Dec 6 Construction of Hetch Hetchy Railroad starts
- 1916 Aug 11 Construction of Lower Cherry Aqueduct starts
- 1917 Apr 6 *U. S. enters World War I after German submarines sink five American ships*
 Summer Lower Cherry Diversion Dam completed
 Jul Drifting Mountain Tunnel begins at Early Intake and South Fork
 Aug Construction starts on Eleanor Dam
 Oct Hetch Hetchy Railroad begins operation
- 1918 Mar 24 Calaveras Dam fails during construction; Michael O'Shaughnessy monitors reconstruction
 May 6 Early Intake (Lower Cherry) Powerhouse starts operation
 Jun Eleanor Dam completed to height of 70 feet
 Sep 18 City begins commercial sale of surplus Early Intake power to PG&E for revenue stream
- 1919 Apr Hermann Schussler dies at age 77
 Jun Hetch Hetchy Sawmill moves to Hog Ranch (now Camp Mather), nearer the dam site
 Aug 1 Utah Construction Co. awarded contract to build O'Shaughnessy Dam
- 1920 Jan 16 O'Shaughnessy Dam Diversion Tunnel completed
- 1921 State Railroad Commission directs Spring Valley to raise Calaveras Dam
 Fall Construction of Moccasin Powerhouse and Priest Dam starts
- 1922 Jun Construction of Moccasin Power Tunnel starts
 Jun 23 Construction of Pulgas Tunnel at Crystal Springs starts
 Jul Construction of Moccasin Penstock starts
 Aug 17 San Francisco obtains option to buy Spring Valley Water Company; agrees to build transbay pipeline
- 1923 Apr 6 O'Shaughnessy Dam completed to a height of 226.5 feet, capacity 206,000 acre feet
 May 18 Contract awarded to begin construction of Bay Crossing Pipeline
 Jul 7 O'Shaughnessy Dam dedicated to its builder
 Oct 2 Construction of Early Intake Diversion Tunnel starts
 Oct Priest Dam completed
- 1924 Sawmill operations at Hog Ranch (Camp Mather) terminated
 Jan Construction begins on trestle bridge across Dumbarton Strait for Bay Crossing Pipeline
 Aug 27 Pulgas Tunnel completed
 Aug 28 Upper Crystal Springs Dam Tunnel, damaged in 1906, restored to use
 Oct 7 \$10 million bond issue for Foothill and Coast Range Tunnels approved
- 1925 Calaveras Dam completed to height of 215 feet
 Apr 10 Early Intake Diversion Dam completed
 Jun 1 Moccasin Penstock completed
 Jun 2 Mountain Tunnel complete, first water delivered to Priest Reservoir
 Aug 14 Moccasin Powerhouse begins commercial operations
 Sep 12 Bay Crossing Pipeline No. 1 placed in partial service
 Nov 27 Hetch Hetchy moves its construction staging area from Groveland to Hetch Hetchy Junction, near Foothill Tunnel
- 1926 Feb 4 Foothill Tunnel construction starts from Pedro Adit
 May 21 Bay Crossing Pipeline No. 1 enters full service



Welding inside Bay Division Pipeline No. 4 1966

- 1927 Apr Construction of Coast Range Tunnel starts
May Construction of Mocho Shaft on Coast Range Tunnel starts
May 20 Charles Lindberg flies the Spirit of St. Louis 1,000 miles across the Atlantic Ocean
- 1928 San Andrés Dam raised to 105 feet
May 1 \$24 million bond issue approved for Coast Range Tunnel and San Joaquin Pipelines
May 1 \$41 million bond issue approved to purchase Spring Valley Water Company
Jul 19 Construction of Moccasin Dam starts
Dec 6 Foothill Tunnel holed through
- 1929 Sep Foothill Tunnel completed
Oct 29 Stock market crashes; nation enters Great Depression
Nov Moccasin Dam and Reservoir completed
- 1930 Mar San Francisco purchases Spring Valley Water Company for \$39.96 million
San Francisco Water Department created under Board of Public Works
- 1931 Second outlet tower built at Crystal Springs Reservoir
Jul 17 Mitchell Shaft methane gas explosion in Coast Range Tunnel cost lives of 12 crew
- 1932 Jan 8 New Charter puts Hetch Hetchy and Water Department under San Francisco Public Utilities Commission
May 3 \$6.5 million bond issue passed to complete Coast Range Tunnel
Jul 9 San Joaquin Pipeline No. 1 completed
- 1933 *Worst year of Great Depression: unemployment reaches 25%, stocks drop 80% of their value*
Nov 7 Two bond issues approved: \$3.5 million to raise O'Shaughnessy Dam, and \$12.1 million to construct second Bay Crossing Pipeline and City Distribution System improvements
- 1934 Jan 5 Coast Range Tunnel holed through from Mocho to Mitchell Shaft
Feb 24 Alameda Creek Siphon No. 1 completed
Aug 24 Construction of Bay Crossing Pipeline No. 2 started
Oct 12 Michael M. O'Shaughnessy dies at 72, just days before Hetch Hetchy Aqueduct is finished
Oct 24 First Hetch Hetchy water flows into Pulgas Water Temple at 10:12 a.m.
Oct 28 City celebrates completion of Hetch Hetchy water system at Pulgas Water Temple
- 1935 Nov 18 Construction starts on Moccasin diversion works
- 1936 Jun 22 Bay Crossing Pipeline No. 2 completed
Aug 31 Moccasin Reservoir Bypass diversion works completed
Dec 16 Interior Secretary Harold Ickes approves plan for disposition of Hetch Hetchy power
- 1938 Jul 1 O'Shaughnessy Dam raised 85.5 feet, to its present capacity of 360,360 acre feet
- 1941 *Dec 7 Surprise Japanese air attack on U.S. fleet at Pearl Harbor; U.S. declares war*
- 1945 Jun 22 Exploratory work at Cherry River dam site starts
Jul 2 Secretary Ickes approves new power disposition contracts as compliant with the Raker Act
- 1946 May 11 Hetch Hetchy starts power delivery to Modesto's Station J
- 1947 Nov 4 \$25 million bond issue approved to construct San Joaquin Pipeline No. 2 and Bay Division Pipeline No. 3
- 1948 Feb Irvington Pump Station moves water from the Sunol Aqueduct into Hetch Hetchy pipelines
- 1949 Hetch Hetchy Railroad tracks removed
Nov 8 \$4 million bond issue approved to construct Cherry Valley Dam; federal government promises \$9 million
- 1950 Jun 9 SFPUC celebrates opening of first portion of San Joaquin Pipeline No. 2 west of Oakdale
Dec Rock River Lime Treatment Plant completed
- 1951 Jun Construction of 22,000-volt power line from Early Intake to Cherry Valley Dam site starts
- 1952 Oct 17 San Joaquin Pipeline No. 2 enters service for entire 47.5-mile length
- 1953 Mar 25 San Joaquin Pipelines No. 1 and No. 2 operate jointly for the first time
Aug Construction of Cherry Valley Dam starts
- 1954 May 18 Cherry Creek water diverted at dam site
- 1955 Oct 27 Cherry Valley Dam dedicated
Nov 8 \$54 million bond issue approved to construct Canyon and Cherry River power projects
Dec 1 Rosa Parks refuses to give up her bus seat in Montgomery, AL; puts face on segregation
- 1956 Bay Division Pipeline No. 3 completed
Mar 15 First joint operation of Hetch Hetchy and Lake Lloyd (Cherry Lake) for flood control



Construction of Stone Dam Flume 1871

- 1957 Aug 30 Construction of Cherry Power and Eleanor-Cherry Tunnels starts
- 1958 Sep 16 Construction of Cherry Powerhouse begins
- 1959 Jan 26 Cherry Power Tunnel is holed through
Apr 6 New transmission line from Early Intake to Moccasin completed
May 18 Eleanor-Cherry Tunnel is holed through
- 1960 Mar 6 First water diversion to Lake Lloyd (Cherry Lake) through Eleanor-Cherry Tunnel
Jun 17 Cherry Power and Eleanor-Cherry Tunnels completed
Aug 1 Cherry Powerhouse begins commercial operation
Aug 25 Early Intake Powerhouse ceases operation after 46 years
- 1961 Feb 24 Water deliveries begin to Lawrence Livermore National Laboratory
Nov 7 \$115 million bond issue approved to build San Joaquin Pipeline No. 3, New Don Pedro Reservoir, Bay Division Pipeline No. 4, San Andreas Water Treatment Plant and Turner (San Antonio) Dam
- 1963 Nov 22 *President John F. Kennedy assassinated in Dallas, TX; nation mourns*
- 1964 Jun 24 Canyon Power Tunnel is holed through
- 1965 Turner Dam completed to 195 feet, forming San Antonio Reservoir
Feb 26 Canyon Power Tunnel is completed
Jun 30 Hetch Hetchy system delivers 220 million gallons to Bay Area, a new record
Nov 3 First water delivered to Groveland Community Services District
- 1966 Sep 14 Sunol Valley Water Treatment Plant activated
- 1967 Aug 25 Robert C. Kirkwood Powerhouse dedicated
Sep 1 Construction on New Don Pedro Dam starts
- 1968 Mar 29 San Joaquin Pipeline No. 3 enters service
- 1969 Jan 27 New Moccasin Powerhouse begins operation
Feb 7 Old Moccasin Powerhouse taken out of service after 44 years
Jul 16 *“One small step for man; one giant leap for mankind” - Apollo 11 lands on the moon*
- 1970 May 28 New Don Pedro Dam topped out
- 1971 May 22 New Don Pedro Dam dedicated
- 1972 Pilarcitos Dam upstream face repaired
Jun 14 Bay Division Pipeline No. 4 completed
Aug 8 San Andreas Filtration Plant activated
- 1974 Aug 9 *President Nixon resigns in response to public outcry over Watergate scandal*
- 1975 Calaveras Dam strengthened
Jul 1 City negotiates and extends PG&E contract covering power wheeling, supplementary energy and standby service
- 1976 Sunol Valley Water Treatment Plant expanded to 160 million gallons per day
Lower Crystal Springs Dam designated Historic Civil Engineering Landmark
- 1982 Feb San Andreas Pipeline No. 3 placed into service
- 1984 Spring Construction starts on power line from new Moccasin Low-Head Power Plant
Nov \$104 million bond issue approved to rebuild water treatment plants and pipelines
- 1986 Moccasin Low-Head Power Plant starts operation
- 1987 First year of prolonged, six-year drought
- 1988 New Crystal Springs Pipeline No. 3 placed in service to South San Francisco
Kirkwood Powerhouse Unit 3 goes into operation
Long-term power contracts signed with PG& E, Modesto and Turlock Irrigation Districts
May Drought deepens; 25% mandatory rationing imposed in San Francisco
- 1989 San Andreas Water Treatment Plant expanded to 120 MGD
Oct 17 *6.9 Loma Prieta Earthquake strikes San Francisco and Monterey Bay regions*
Nov 9 *Berlin Wall between East and West falls; Cold War is over*
- 1991 Unprecedented fifth critically dry year in Sierra Nevada
SFPUC builds connection to state’s South Bay Aqueduct to transfer purchased water supplies
Calaveras Pipeline replaced throughout its length
Apr Hetch Hetchy Reservoir reaches dangerously low levels; 45% mandatory rationing imposed
Nov Board of Supervisors mandates recycled water use for irrigation and flushing waste



Automobile crossing South Fork 1925

- 1992 Heavy winter storms recharge San Francisco's local and Sierra Nevada reservoirs
SFPUC assesses feasibility of using local aquifers as new drinking water sources
- 1993 California Department of Water Resources declares drought over; rationing rescinded
- 1994 Feb Dedication of Harry W. Tracy (formerly San Andreas) Water Treatment Plant
Jul Muni removed from SFPUC, which retains control of Water and Hetch Hetchy enterprises
- 1996 Mar Federal Energy Regulatory Commission (FERC) reauthorizes New Don Pedro Dam
Jul Clean Water Program moves to SFPUC, which now governs all water enterprises
- 1997 Nov 4 \$304 million bond issue passed to upgrade water treatment facilities and make seismic improvements
- 1998 Jul 75th Anniversary Celebration commemorating completion of O'Shaughnessy Dam.
- 2000**
- 2000 *May California Energy Crisis hits San Francisco Bay Area hardest; rolling blackouts are frequent*
Sep Alameda Watershed Management Plan adopted by SFPUC
- 2001 SFPUC completes intertie with Santa Clara Valley Water District system for emergency supplies
Jun Peninsula Watershed Management Plan adopted by SFPUC
Sep 11 Terrorists hijack commercial airliners to bomb World Trade Center in New York City
Dec SFPUC adopts Interim Shortage Allocation Plan to amend wholesale water agreements
- 2002 Jan 18 California enacts the Wholesale Regional Water System Security and Reliability Act (AB 1823) to protect the interests of SFPUC suburban customers in Hetch Hetchy system improvements
Nov 5 \$1.6 billion bond measure approved to rebuild Hetch Hetchy water system; voters establish citizen advisory and bond oversight committees, and a rate fairness board
- 2003 \$50 million in process and facility upgrades to Sunol Valley Water Treatment Plant completed
- 2004 Jan Priest Reservoir Bypass completed; disrupts delivery of Hetch Hetchy supplies without service impacts
Feb San Francisco changes to chloramine residual disinfection to improve drinking water quality



Celebration of San Francisco's purchase of Spring Valley Water Company, City Hall Rotunda 1930

San Francisco City Water Company General Managers

1858 - 1860 Alexei Waldemar von Schmidt

Spring Valley Water Works General Managers

1860 - 1864 Alexei Waldemar von Schmidt
 1864 - 1866 Calvin Brown
 1866 - 1909 Hermann Schussler
 1911 - 1914 Fred C. Herrmann
 1914 - 1930 George A. Elliott

San Francisco Water Department General Managers

1930 - 1948 Nelson A. Eckart
 1949 - 1957 George W. Pracy
 1957 - 1963 James H. Turner
 1963 - 1965 Oral L. Moore
 H. Christopher Medbery
 1965 - 1976 Arthur H. Fry, Jr.
 1976 - 1978 Kenneth R. Boyd
 1978 - 1984 Eugene J. Kelleher
 1984 - 1985 Arthur Jensen (Acting)
 1985 - 1986 Dean W. Coffey
 1986 - 1989 James D. Cooney
 1989 - 1990 Arthur Jensen (Acting)
 1990 - 1999 John P. Mullane

San Francisco Water Enterprise Assistant General Managers

2005 - Michael Carlin

San Francisco Power Enterprise Assistant General Managers

2005 - Barbara Hale

Hetch-Hetchy Water and Power General Managers

1912 - 1932 Michael M. O'Shaughnessy
 1932 - 1942 Lloyd T. McAfee
 1942 - 1945 James H. Turner
 1945 - 1952 Axel O. Olson
 1952 - 1961 Harry E. Lloyd
 1961 - 1979 Oral L. Moore
 1979 - 1985 Dean W. Coffey
 1985 - 1986 Theodore L. Chung (Acting)
 1986 - 1988 Dean W. Coffey
 1988 - 1993 Anson B. Moran
 1993 - 2000 Lawrence T. Klein
 2000 - 2001 Laurie Park (Acting)
 2002 - 2004 Marla Jurosek & Don Larramendy (Acting)
 2005 - Don Larramendy

San Francisco Public Utilities Commission General Managers

1932 - 1945 Edward G. Cahill
 1945 - 1956 James H. Turner
 1956 - 1958 T. N. Bland
 1959 - 1964 Robert C. Kirkwood
 1964 - 1970 James K. Carr
 1970 - 1976 John D. Crowley
 1977 - 1979 John B. Wentz
 1979 - 1983 Richard Sklar
 1983 - 1986 Rudolf Nothenberg
 1986 - 1988 Donald J. Birrer
 1988 - 1989 Dean W. Coffey
 1989 - 1993 Thomas J. Elzey
 1993 - 2000 Anson B. Moran
 2000 - 2001 John P. Mullane
 2001 Lawrence Klein (Acting)
 2001 Steven Leonard (Acting)
 2001 - 2004 Patricia E. Martel
 2004 - Susan Leal



San Francisco supervisors visit the Sierra Nevada 1917

San Francisco Water and Power by Warren D. Hanson, 1985

Subsequent editions: 1987, 1994, 1999, 2002 and 2005

Mr. Hanson wished to acknowledge former San Francisco Public Utilities Commission employees James H. Leonard and Ted Wurm for their careful and attentive editing of the 1967 and 1979 editions, and to draw the reader's attention to Mr. Wurm's *Hetch Hetchy and its Dam Railroad* (Howell-North Books: 1973 *et seq*) as a valuable reference.

Additional sources include:

San Francisco Water, published quarterly 1922 - 1930 by Spring Valley Water Company, Edward F. O'Day, editor.

San Francisco Water and Power, published for the San Francisco Public Utilities Commission by the Bureau of Engineering, 1935 and 1947.

Annual reports of the Bureau of Engineering, Board of Public Works, 1908 - 1932.

San Mateo County Historical Association, College of San Mateo.

Society of California Pioneers.

Congressional Record - 1893/1894; 1899/1900; 1912/1913.

"Hetchy" by R. W. Taylor.

"The Top of the Peninsula." by Marianne Babsal (Historic Resource Study, Golden Gate National Recreation Area, National Park Service, 1990).

History of California, Hubert Howe Bancroft, 1963-1970.

Yosemite's Hetch Hetchy Railroad, Ted Wurm (Stauffer Publishing: 1990, 4th ed., rev.)

Annual Reports of the San Francisco Water Department.

Annual Reports of the San Francisco Public Utilities Commission.

Municipal Reports, 1850-75.

Of special and valued assistance was Gladys Hansen, former Curator of the San Francisco Room at the San Francisco Main Library, to whom the author and editors owe a deep debt of personal gratitude. Ms. Hansen's research into the true number of casualties from the 1906 Great Earthquake and Fire is invaluable to San Francisco's history.

Anne Milner and Franz Hansell contributed to updating the 1994 edition of *San Francisco Water and Power*.

For the 1999 edition, the editors wish to acknowledge the special contributions of San Francisco Public Utilities General Counsel Thomas M. Berliner and Deputy City Attorney Joshua D. Milstein in reorienting the text chronologically to unfold the compelling story of San Francisco's search for water and the landmark Hetch Hetchy building program. Thanks to the firm JRP Historical Consulting, Inc. for reviewing the text for accuracy.

The 2005 edition contains significant revisions by editors Frank Kukula, Christopher Nelson and Mary Williams to update the text and photographs. They wish to acknowledge the special contributions of Photography Archive Librarian Katherine du Tiel for her zeal in locating new historical photographs; Hetch Hetchy Water & Power archive librarians Claudia Day and Katherine Jose for their diligent research; and senior operations managers in the San Francisco Public Utilities Commission water and power enterprises for their careful review of new inclusions to the text.

The editors gratefully acknowledge Mimi Chu Reyes, a superb graphic designer, who is responsible for the new look of this 2005 edition.

PHOTO CREDITS:

Front cover photo: O'Shaughnessy Dam and Hetch Hetchy Reservoir

Page 1: San Andreas Reservoir and Watershed

Page 19: Headwaters of Tuolumne River in winter

Page 28: O'Shaughnessy Dam and Hetch Hetchy Reservoir 1926

Page 48: Hetch Hetchy Railroad snowplow 1932

Unless otherwise credited, photography is by the San Francisco Public Utilities Commission. Undated photographs are recent.

